

Method *Skinvat*

individualized program to combat aging

Texinfine
LABORATORY

Pharmacology Research Laboratory
60 rue Duguesclin - BP 6114
69466 LYON - FRANCE
Tel. : +33 (0)4 78 93 26 27
Fax : +33(0)4 72 44 32 75
Site : www.texinfine.fr

Texinfine
LABORATORY

Method Skinval

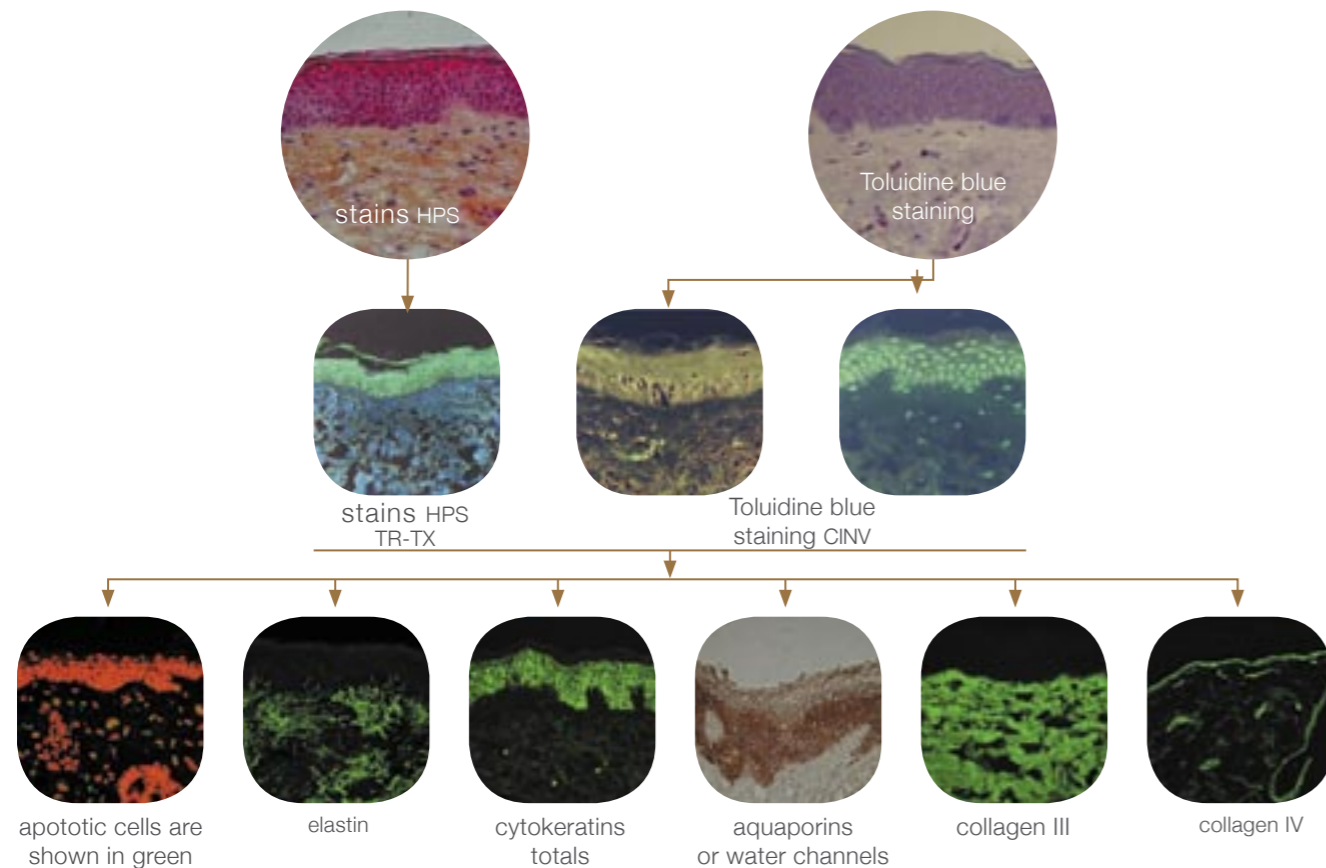
An **innovative scientific method** that at last makes it possible to detect the exact biological condition in order to discover the stage the aging process has reached. Since we all age differently via steps of which the intensity, sequence and duration are linked to genetics and your own individual lifestyle (sun, smoke, pollution, harsh environment ...).

By realizing the demands of the skin and its history, we can intervene exactly where the skin tissues require it. Thanks to a series of effective agents with demonstrated efficacy, we can now choose the one(s) required to repair and preserve the tissues in order to halt the aging process and stop its progression.

The *Method Skinval* has now made this possible by means of:

AN INDIVIDUALIZED EXAMINATION

Using a sample of skin taken from the zone in front of the trignon, histological stains are used to identify any damage; immunohistochemical examinations are then carried out to determine the biological cause of the damage. A given change can in fact have a variety of very different causes. For example, a lack of collagen III can be due to defective synthesis, to its being broken down too rapidly by enzymes, or to the presence of an invisible, abnormal form of collagen. In these three situations, the active substance will be different.

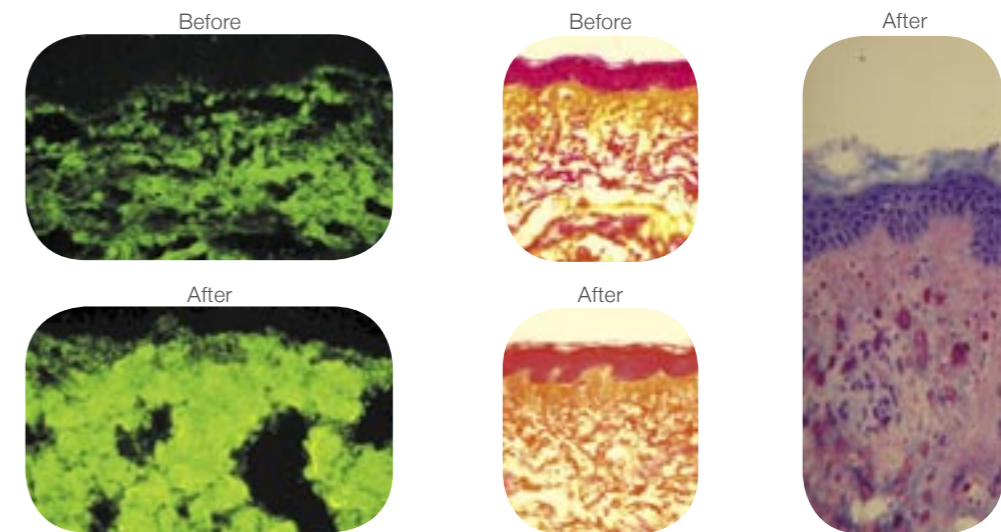


AN INDIVIDUALIZED CARE PROGRAM

The *Method Skinval* attempts to identify the source of these types of damage so as to be able to propose active substances that are able to act against these biological targets, a science-based, individualized care program.

The findings will be sent to the doctors, the one for the prescriber includes the care program, and that for the patient contains explanations and interpretation of his or her results.

The active substances are supplied as creams or milks, and they all have very specific biological roles; this means that they must be used in a logical order if they are to produce the best possible result. We have deliberately decided that each of our formulated creams will contain a high concentration of a single active substance, so that it acts with optimum efficacy. This is a scientifically-justified decision, because the body responds better to a single stimulation than to several simultaneous biological stimulations.



Some preparations corresponding to the *Method Skinval* can be used for their specific activity:

- **TEX-OE** (extract of *Opuntia ficus indica*) for its role in repairing tissues subjected to aggression or damage or exposed to the sun.
- **PPE** (extract of the alga *Padina pavonica*) for its moisturizing potential and ability to activate cells and accelerate the synthesis of collagens and glycosaminoglycans.
- **CAE** (extract of *Punica granatum*) regulates the function of the water channels. It is indicated for skin that is either very dry or clogged with water.
- **VITAMIN E** for its role against free radicals, particularly in smokers and people exposed to pollution.
- **NV**, which is particularly useful for very thin skin, which is easily injured and does not heal well.

The creams have been developed for use on the face, eyelids, neckline and hands. The milks are suitable for the rest of the body. The milks and creams contain the same concentrations of the active ingredients.

A TEXINFINE Laboratory innovation
Tel : + 33 (0)4 78 93 26 27
Devised by DICLEMS 6, rue des Bruyères 69500 BRON
Tel : +33 (0)4 72 34 52 76